

# Hurricane Ida Public Works infrastructure Recovery

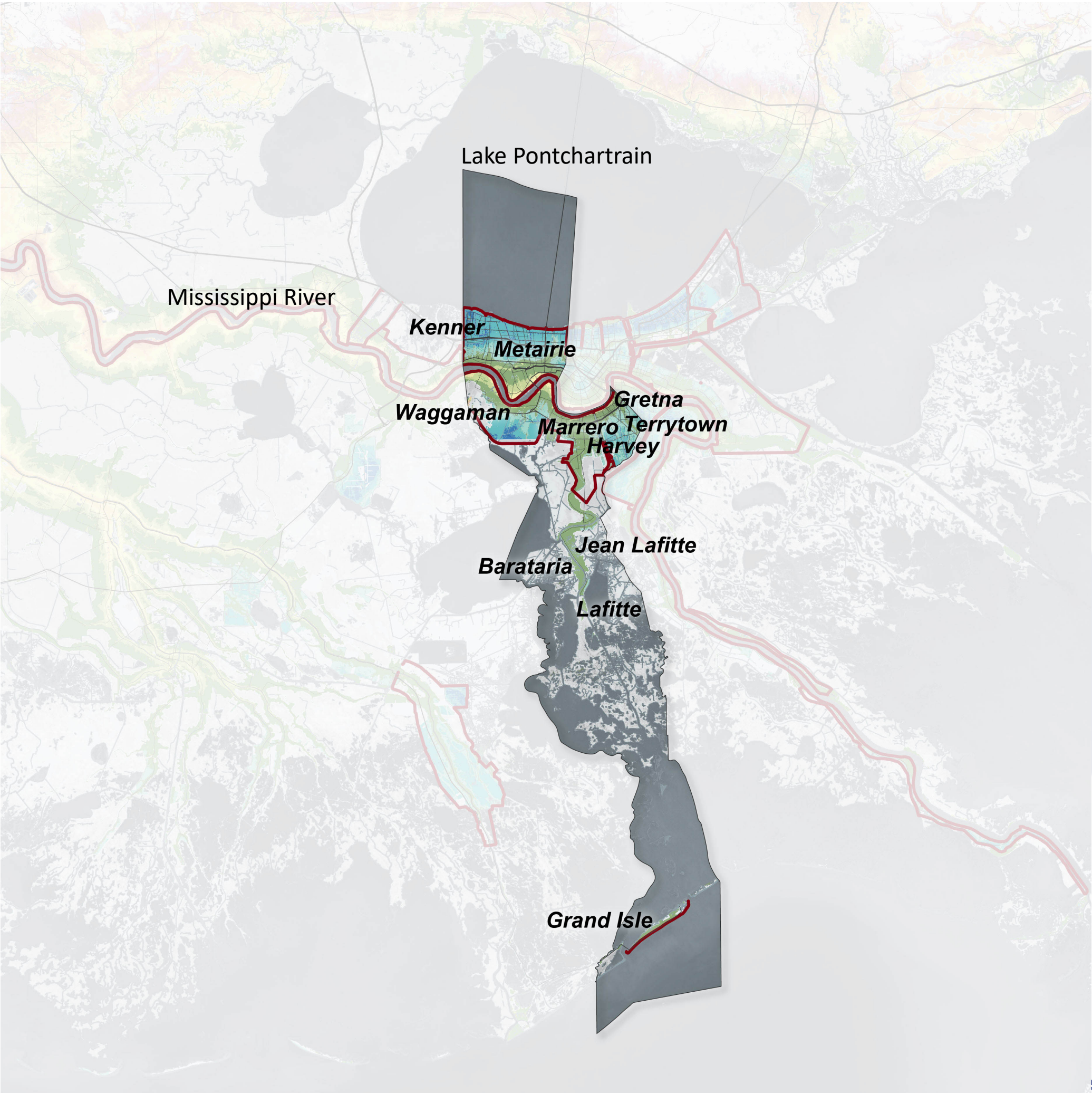


# Jefferson Parish

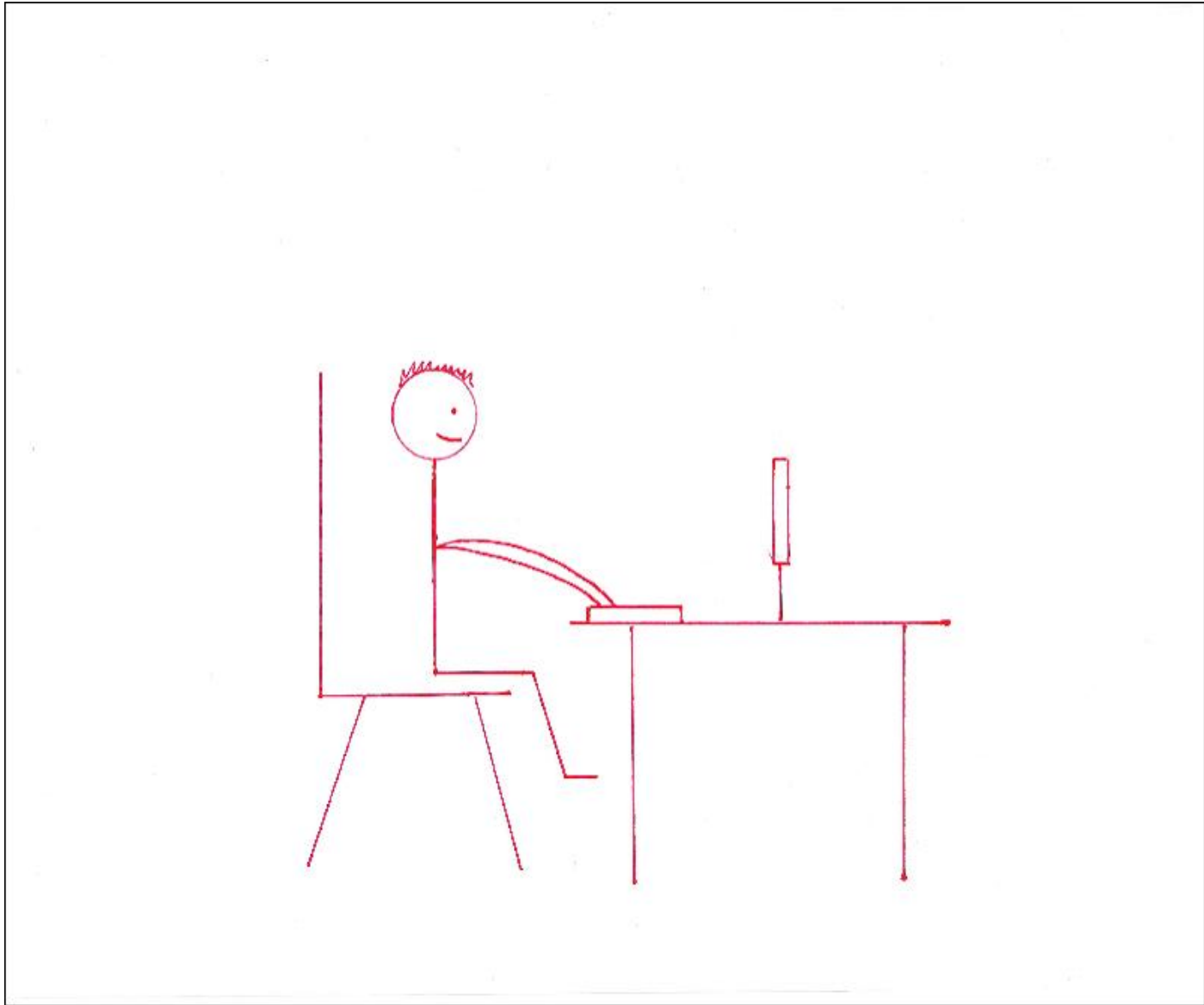
2020 Population: 432,346

Land Area: 296 Square Miles

Water Area: 370 Square Miles



# Emergency Operations Center Command & Control





# Water Infrastructure Restoration - Short Term

## 1,700 Waterline Miles with over 200 Breaks





# Water Infrastructure Restoration Long Term (Grand Isle)





# Streets/Parkways/Engineering Infrastructure Restoration

**3,200 Roadway Miles**  
**220 Bridge Structures**  
**159 traffic Signal Systems**

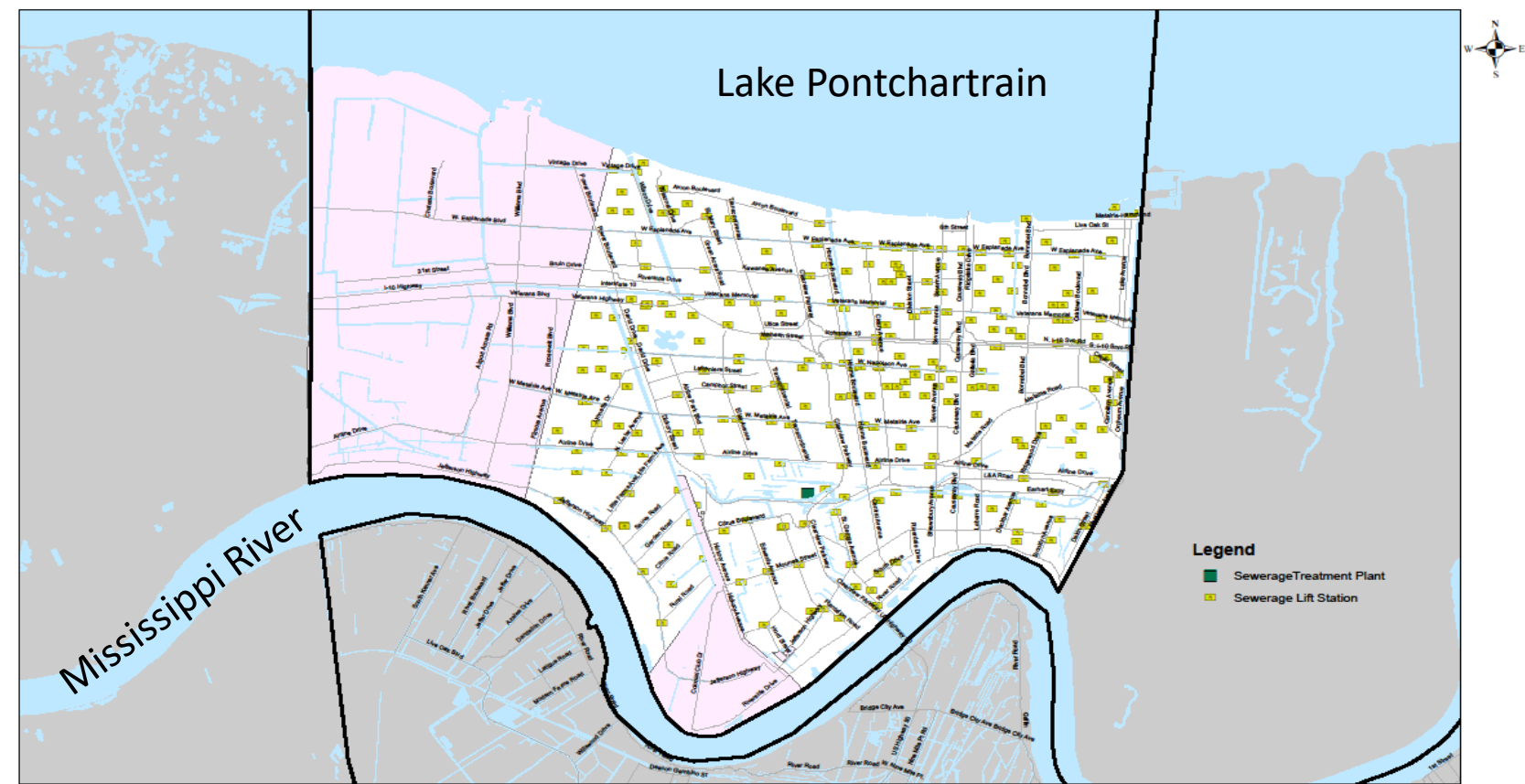




# Sewer Infrastructure Restoration

## Short Term

530 Lift stations / 5 Treatment Plants /  
1,500 Sewer Line Miles



Jefferson  
Parish  
State of Louisiana

Jefferson Parish  
Sewerage Lift Stations, East Bank





# Sewer Infrastructure Restoration Long Term Rosethorn Treatment Plant (Lafitte)





# Drainage Infrastructure Restoration Long Term (Crown Point/Lafitte/Barataria) 16 Small Pump Stations





# Environmental Restoration



Grand Isle Sand Restoration



Debris Removal



# CONNECT WITH US

---



**JP WEBSITE**



**INSTAGRAM**



**FACEBOOK**



**YOUTUBE**



**TWITTER**



**JPTV**

Text **JPALERT** or  
**JPNOTICIAS** to **888-777**